

AGENDA
April 24, 2018 at 4:00 p.m.
Special Council Meeting – Council Chambers, Ely City Hall

- I. CALL TO ORDER

- II. ADDITIONS OR OMISSIONS:

- III. OLD BUSINESS:

- IV. NEW BUSINESS
 - A. Resolution 2018-015 Resolution Approving County Project within Municipal Corporate Limits
 - B. Discussion about the Town of Morse requesting to purchase tax forfeited property (parcels 465-0020-04990 and 465-0020-05000) which is adjoining to City of Ely property on Lookout Ridge Road.

- V. ADJOURN



STATE AID FOR LOCAL TRANSPORTATION
RESOLUTION – Approving County Project within Municipal Corporate Limits

Resolution# 2018-015
Adopted 04/24/2018

CITY OF ELY
RESOLUTION APPROVING COUNTY PROJECT WITHIN
MUNICIPAL CORPORATE LIMITS

WHEREAS, plans for Project No. SAP 069-752-002 (CP 0152-395107) showing proposed alignment and cross-sections for the construction, reconstruction or improvement of County State-Aid Highway No. 152 (17th Avenue) within the limits of the City of Ely as a County Project designed to State Aid standards have been prepared and presented to the City of Ely.

NOW, THEREFORE, BE IT RESOLVED: That said plans be in all things approved.

Upon vote taken thereon, the following voted:

For:

Against:

Whereupon said Resolution No. 2018-015 was declared duly passed and adopted this 24th day of April, 2018.

Chuck Novak, Mayor

Harold R Langowski, Clerk/Treasurer

CERTIFICATION

State of Minnesota
County of St. Louis
City of Ely

I hereby certify that the foregoing Resolution is a true and correct copy of a resolution presented to and adopted by the City Council of Ely, Minnesota at a meeting therefor held in the City of Ely, Minnesota, on the 24th day of April, 2018, as disclosed by the records of said City in my possession.

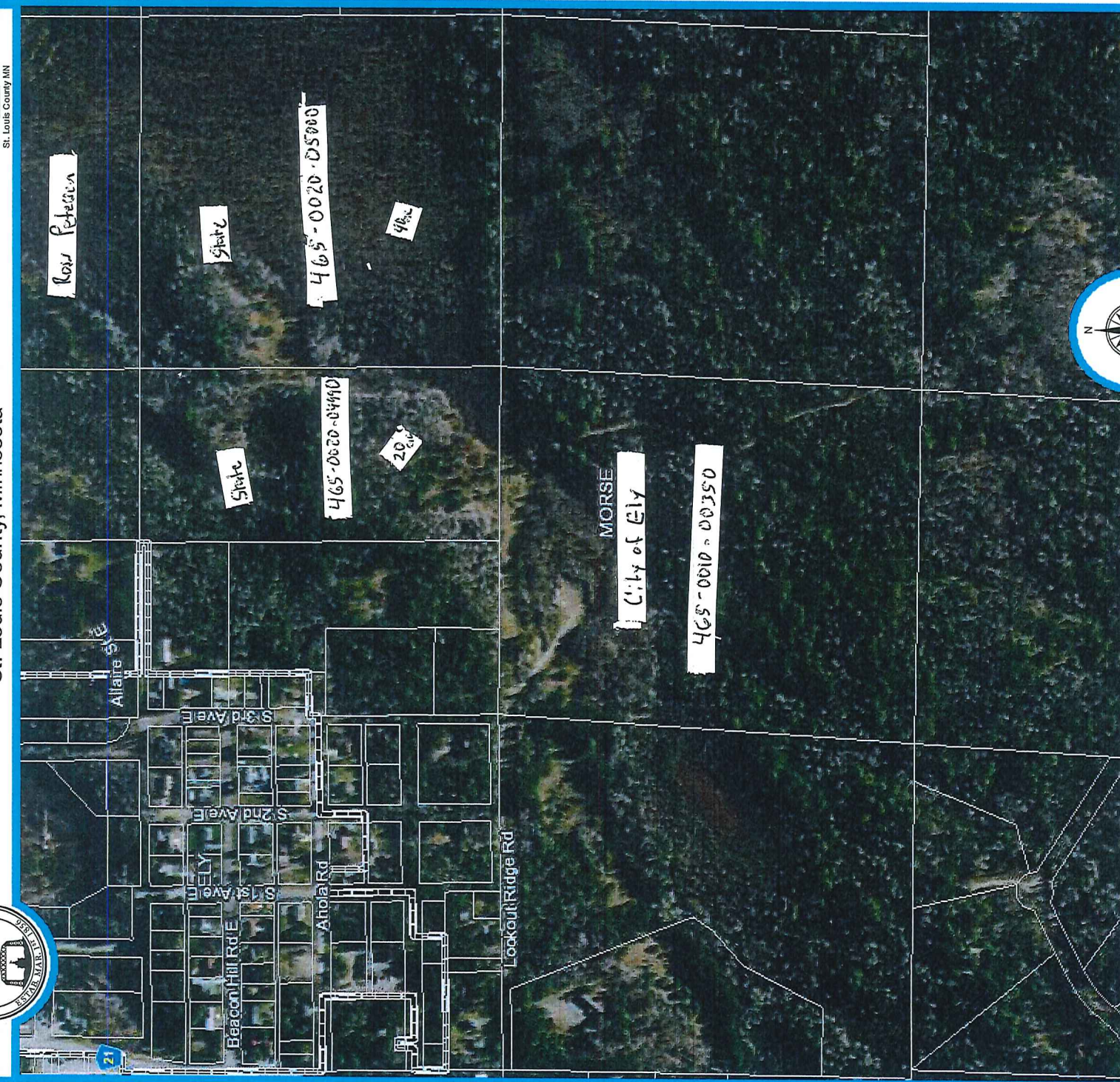
(Seal)

City Clerk



County Land Explorer

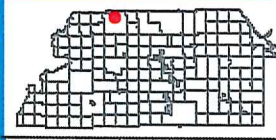
St. Louis County, Minnesota



Title...

default author

Map created using County Land Explorer
www.stlouiscountymn.gov/explorer



St. Louis County www.stlouiscountymn.gov/explorer Minnesota

Disclaimer
This is a compilation of records as they appear in the Saint Louis County Offices affecting the area shown. This drawing is to be used only for reference purposes and the County is not responsible for any inaccuracies herein

© Copyright St. Louis County Minnesota | All Rights Reserved | Printed: 4/10/2018