

AGENDA ADDITIONS
June 4, 2024 at 5:30pm
Regular Meeting Ely City Council – City Hall, Council Chambers

1. CALL TO ORDER
2. ROLL CALL: Council members A.Forsman, Kess, Debeltz, Callen, Campbell, Bisbee, and Mayor Omerza
3. APPROVAL OF MINUTES:
(4-9) Approve minutes from the May 21, 2024 Regular Council Meeting.
4. ADDITIONS OR OMISSIONS TO AGENDA:
 - A. **Additions 9.A.i – Supplemental Information for Pioneer Mine – Ore Car Donation**
 - B. **Additions 13.B. Resignation from Victoria Scarbrough from the Library Board and to post for an open position.**
5. MAYOR'S REPORT:
6. CONSENT AGENDA:
 - A. Motion to waive readings in entirety of all ordinances and resolutions on tonight's agenda.
 - B. (10) Make the June 13, 2024 a Special Council Meeting for the Community Presentation by SafeTech Solutions regarding the Future of EMS at 4pm at the Ely Senior Center.
7. REQUESTS TO APPEAR:
8. COMMITTEE REPORTS:
 - A. Standing/Special
 - a. (11-14) Board of Adjustment (BOA)
 - i. Matter of Information: Board of Adjustment approved the variance for Frisky Otter at 302 E Sheridan St to have an additional freestanding sign on the property.
 - ii. Matter of Information: Board of Adjustment approve the variance submitted by Daniel Krings at 718 Lakeview Ave N for the front yard setback requirements in the Shagawa Lake Shoreland Overlay District of 35 feet, to 20 feet for the proposed residential home remodel.
 - b. (15-17) Planning and Zoning Commission
 - i. Matter of Information: June's Planning and Zoning meeting will be on June 12th at 5:30pm due to June 19th being a Holiday.
 - c. (18-28) Ely Utilities Commission (EUC)
 - i. Recommendation from EUC to approve attendance to the MMUA Summer Conference in Fargo, ND, August 19-21,2024.

- ii. Recommendation from EUC to approve Clerk Harold Langowski's nomination to the MMUA Board of Directors.
- iii. (21-28) Recommendation from EUC to publish the Drinking Water Consumer Confidence Report in the Ely Echo and the City of Ely website.
- iv. Recommendation from EUC to approve \$77,864.16 payment to Rice Lake Construction Group for Pay Estimate #17 at the Waste Water Treatment Facility.
- v. Recommendation from EUC to approve \$4,832.98 payment to Duluth Archeology Center, LLC for phase one of the archeological review of the new pump house area.
- vi. Recommendation from EUC to approve \$43,080 payment to WESCO for the purchase of decorative light poles.
- vii. Recommendation from EUC to approve \$1,138.48 lighting rebate to MN North College, VCC Campus.
- viii. Recommendation from EUC to approve \$404,414.90 payment of EUC April Bills.
- ix. Recommendation from EUC to approve \$1000 payment to Mick Shusta for A Operator Services.

d. (29-31) Telecommunications Advisory Board (TAB)

- i. Recommendation from TAB to authorize to proceed with CTC on the installation of fiber and purchase of equipment not to exceed \$20,000 if an agreement can be finalized concerning the use of WIFI with the festival organizers.
- ii. (31) Recommendation from TAB to pay Ely Area Television \$200 for the Additional filming in May.

e. (32-38) Employee Relations (ER)

- i. (33-38) Recommendation from ER to approve job description of Building Engineer and the position posted internally per the employee contract.
- ii. Recommendation from ER to authorize the ER Committee to interview the three internal candidates for the position of Public Works Foreman.

f. (39-41) Range Association of Municipalities & Schools (RAMS)

g. Other Committee Meetings

9. DEPARTMENTAL REPORTS:

A. Clerk-Treasurer

- i. (Additions A1-A2) (42-44) Pioneer Mine – Ore Car Donation

B. Fire Chief

C. Library Director

D. Police Chief

E. City Attorney

- i. (45-46) 2nd Reading Ordinance No. 377 An Ordinance of the City of Ely, Minnesota Adding to the Ely City Code, Chapter 20, Section 20.1.30, Entitled Zoning Map Amendment (Old Depot Site – 212 N Central Ave)

F. City Engineer

10. COMMUNICATIONS:

11. CLAIMS FOR PAYMENT:

- A. (47-50) City and EUC Claims for June 4, 2024 for \$85,697.81

12. OLD BUSINESS:

13. NEW BUSINESS:

- A. (51-52) Accept the resignation from Aspen (A.Z) Eck from the Ely Tree Board and Park and Recreation Board and to post for the open positions.
- B. **(Addition A3) Accept the resignation from Victoria Scarbrough from the Library Board and to post for an open position.**

14. OPEN FORUM:

15. ADJOURN:

Logistical Proposal for DMIR Jennie ore car Ely, MN

Renee <renee@northshoretrack.com>

Mon, Jun 3, 2024 at 6:12 PM

To: David Anderson <david.anderson@cn.ca>

Cc: Ely Echo <elyecho@aol.com>, Harold Langowski <elyod@ely.mn.us>, "Jeff Heller" <jeff.heller@northshoretrack.com>

Dave-

I have been working with the City of Ely and the Ely Arts and Heritage Center-Pioneer Mine to help with securing the resources needed to accept a donation of a Jennie Ore car (DMIR) for museum purposes at the Pioneer Mine. As a maintenance of way railway contractor, we are positioned to provide the majority of the logistics and support for this project as a donation. We have also spoken to a local contractor in Ely that can provide equipment and materials support for a portion of the project as well. It is assumed the railcar will be similar to the below railcar:



The specific plan would be as follows:

North Shore Track Services will provide the loading of the railcar from Proctor Yard onto a rail-mounted low-boy trailer capable of holding the railcar. The railcar will be loaded via winch and secured. There are no weight or size limitations expected based on the dimensions and weight of the railcar. Hauling permits will be obtained as required. The City of Ely will prepare the subgrade including excavation, grading, and sub ballast (MNDOT Class 5) approximately 8 inches thick followed by 6 inches of crushed rock material to the dimensions to be determined by North Shore Track Services. North Shore Track Services will perform track construction of approximately 40 feet and provide the OTM, railroad ties, tracks, and hand tamping to provide a final track grade on which to place the railcar. Louis Leustek and Sons, Inc will provide a loader on-site to assist in unloading and placement of the railcar. Material for cribbing of the ties will be provided by Forest Concrete Products and placed by Louis Leustek and Sons. Placement of the railcar will be with assistance from a front-end loader along with careful winching from the truck. Final securement of the railcar will be through chocking with aggregate as well as welding the wheels to the track.

Jeff Heller and I are meeting with Nick Wognum and Harold Langowski Wednesday at the Pioneer Mine location to determine final placement location, verification of elevation and dimensions, and preliminary staking of the work to be completed. Once CN provides acceptance of this logistics plan and a commitment for the car, the City and North Shore Track Services will move toward completion of the work.

North Shore Track Services is positioned to commence our portion of the work once the City has progressed on the subbase portion of the project, and the surface is prepped for construction of the track structure. We will continue to work closely with the City on this and Louis Leustek and Sons, Inc. Harold Langowski would like to present this to the Ely City Council Tuesday, June 4 for approval.

Please reach out to Nick, Harold, Jeff Heller, or I with any other questions on this logistics plan. Ely has an all-class reunion the week of July 4 so hoping it is possible to complete this by that week if no unusual circumstances prevent the completion by then. Many Ely locals worked on the railroad from Ely to the Iron Range as well so this ties it all together.

Sincerely,

Renee Beaumier, PE/CSP Health, Safety, and Environment Manager

710 S. 59th Avenue West

Duluth, MN 55807Ely

Office: (218) 727-3671

Cellular: (218) 390-7391



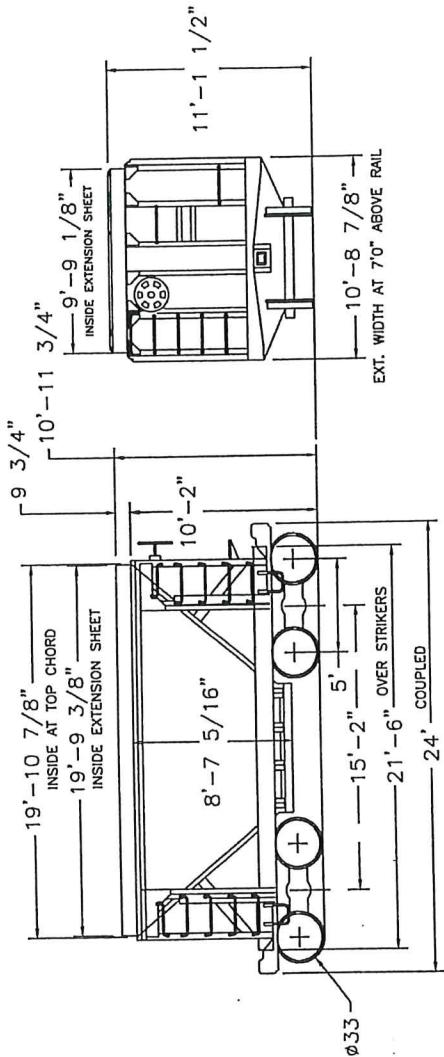
North Shore Track
SERVICES INC.

AI

REV.	DATE	BY	DESCRIPTION
A	12/01	JFR	UPDATES

A.A.R. CL. HMA
& CODE J210

INSIDE LENGTH — 19'-10-7/8"
INSIDE WIDTH — 10'-5-1/2"
HOPPER OPENING — 6'-6"x6'-10"
DOOR OPENING — 27'-3/4"x6'-10"



U29 TO U31

HIGH-SIDE ORE CAR (MINI)
CLASS U-29 to U-31 1640 ORE CARS NUMBERS 51000 to 53498

RECEIVED — U-29-1953, U30-1953 U31-1957
WEIGHT — 45,400 LBS.
CAPACITY — 154,000 LBS.
CUBIC CONTENTS — LEVEL FULL — 1,157 CU. FT.
CONVERTED TO MINI-SIDES — 1971 THRU 1980
ALL CARS EQUIPPED WITH ROLLER BEARINGS

DOOR MECH. PATENTS — ENTERPRISE
BUILDER — SEE INDIVIDUAL CLASSES
TRUCK — A.S.F. RIDE CONTROL A3
SIDE FRAME — CAST STEEL SECT. U.
JOURNALS — 6"x11" A.A.R.

A2

4 June 2024

To Whom It May Concern,

Please accept my resignation from the Ely Public Library Board, effective immediately. Due to a change in my life circumstances, I can no longer effectively serve in my capacity on this Board.

Thank you,

Victoria Scarbrough

~~Nick~~ Scarbrough